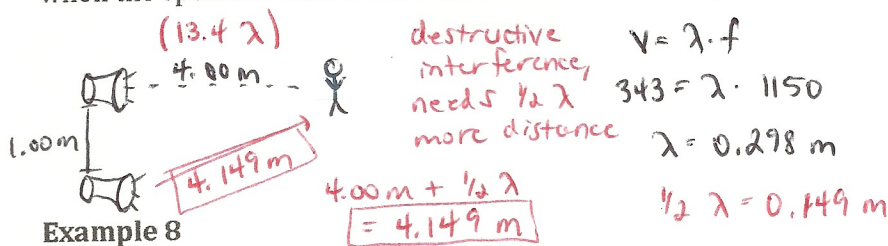


Wave Interference and 'Beats'

Example 7

Two speakers are 1.00 m apart. A person stands 4.00 m away from one of the speakers. How far must this person be from the second speaker in order to detect destructive interference when the speakers emit a 1150 Hz sound in room temperature air.



Example 8

A guitar string produces 4 beats per second when tuned with a 350 Hz tuning fork and 9 beats per second when tuned with a 355 Hz tuning fork. What is the actual frequency of the guitar?

